



Marzinski Horse Trail

Manistee Ranger Station
412 Red Apple Road
Manistee, MI 49660
(231) 723-2211 Voice
(231) 723-0124 TTY



The Marzinski Horse Trail and Campground were developed for the horse enthusiasts, who enjoy riding through a forested quiet trail system. The trail is accessed by both the Marzinski Trailhead and Campground and the Steinberg Trailhead. Neither trailhead is maintained for horse use in the winter months. Steinberg Trailhead doubles as a snowmobile trailhead. The Forest Service and volunteers maintain the trail system, which is marked by cedar-routed signs and posts.

LOCATION

Marzinski Trailhead and Campground is located between the communities of Wellston and Manistee.

NATIONAL FOREST ACCESS CAMPGROUND

From the east, travel west on M-55 from Wellston 11 miles to Marzinski Road. Turn left on Marzinski Road and travel .25 miles to the entrance.

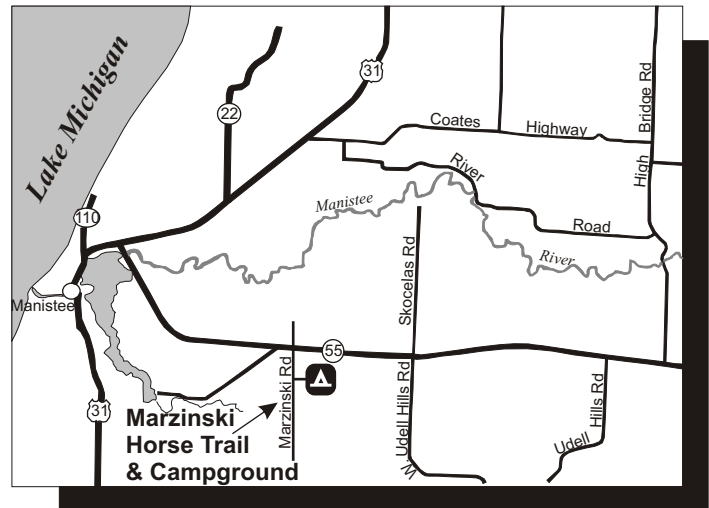
From the west, at the junction of US31 and M-55, drive east about 7 miles to Marzinski Road. Turn right onto Marzinski Road and travel .25 miles to the entrance.

FACILITIES AVAILABLE

- 21 Primitive campsites (some with hitching posts)
 - 1 Vault toilet building
 - 1 Hand Pump
- 21 Fire rings
- 21 Tables
- Hitching Posts
- 20 Miles of maintained trails

SEASON

The managed season is from May 1 through Labor Day. However, camping is allowed year-round, unless closed by snowfall. The trail is open year-round. Please check with the Manistee Ranger Station regarding dates outside the managed season (231-723-2211 or TTY 231-723-0124).



FEES

There are no fees associated with this trail system or campground. No reservations may be made for the campsites.

CONSIDERATIONS

Trails are open to non-motorized use only. They are designed for horse riders but may be used by hikers as well.

Horse riders are asked not to access the Little Manistee River and be careful when crossing adjacent roads.

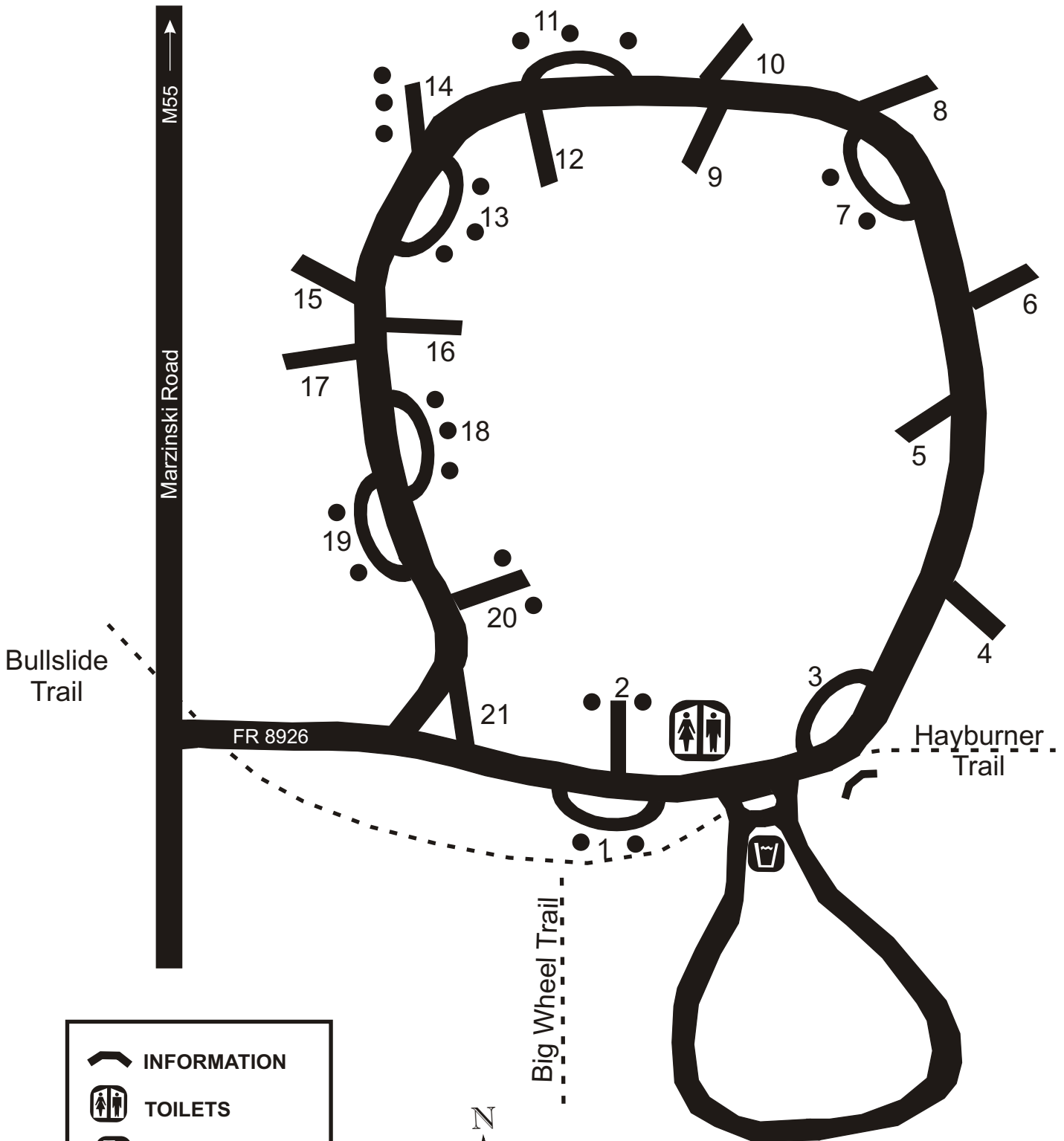
Camping is limited to 14 continuous days and you must occupy the site every day.

Care should be taken to keep the area clean and in the condition it was found, so visitors are asked to please pack out what they pack in.

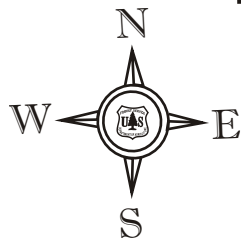
“The U. S. Department of Agriculture (USDA) prohibits discrimination in all its programs and activities on the basis of race, color, national origin, age, disability, and where applicable, sex, marital status, familial status, parental status, religion, sexual orientation, genetic information, political beliefs, reprisal, or because all or part of an individual's income is derived from any public assistance program. (Not all prohibited bases apply to all programs.) Persons with disabilities who require alternative means for communication of program information (Braille, large print, audiotape, etc.) should contact USDA's TARGET Center at 202-720-2600 (voice and TDD). USDA is an equal opportunity provider and employer.”

09/21/06

Marzinski Campground

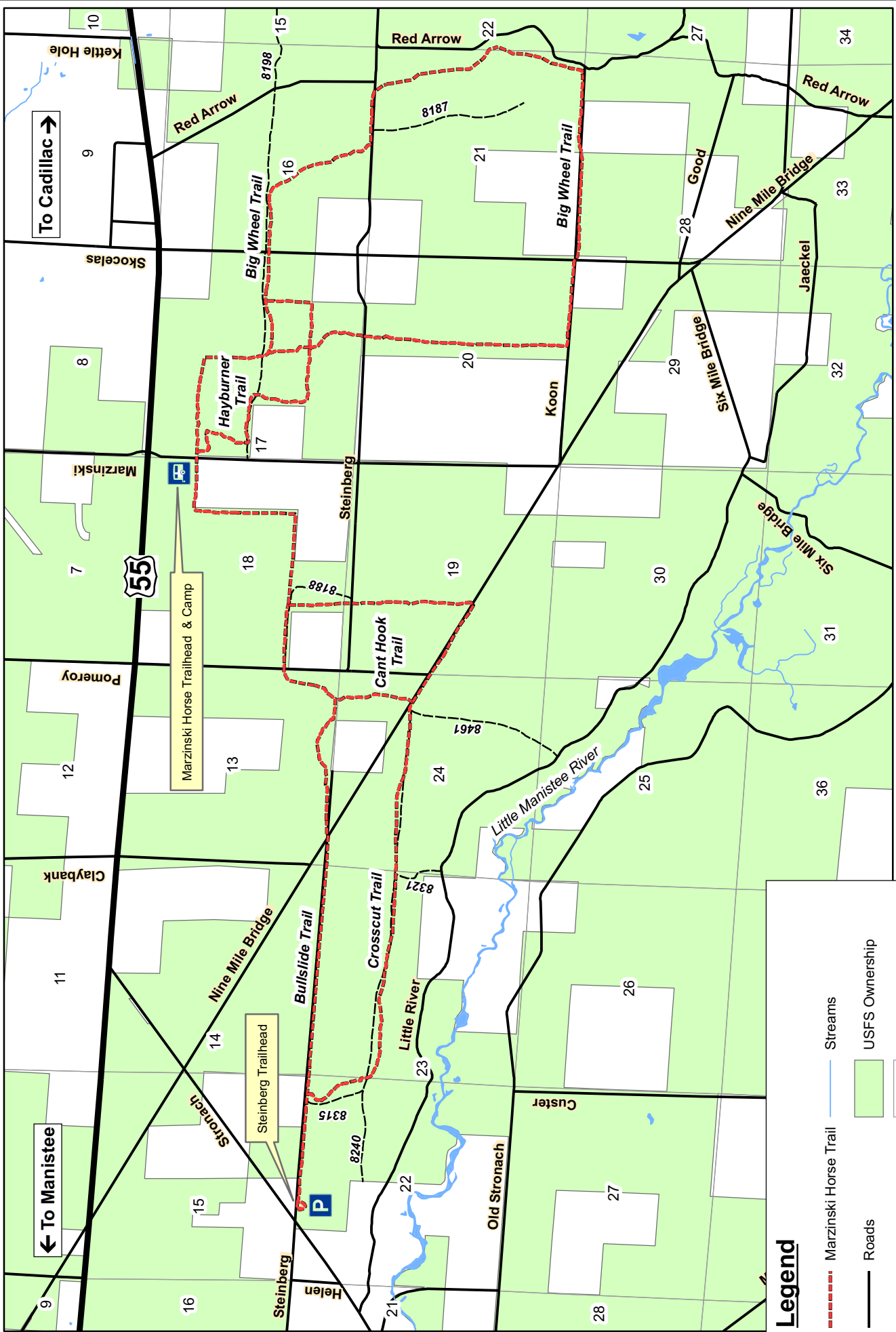


-  INFORMATION
-  TOILETS
-  GARBAGE BIN
-  WATER
- 2** FAMILY CAMPSITE
- HITCHING POST



Huron-Manistee National Forests
 Manistee Ranger Station
 412 Red Apple Road
 Manistee, MI 49660
 (231) 723-2211

Huron-Manistee National Forests Marzinski Trailhead & Horse Camp



To Cadillac →

← To Manistee



Legend

- - - - - Marzinski Horse Trail
- Streams
- Roads
- USFS Ownership
- Forest Roads
- Township/Range Sections